



Notice of highway improvement works

July 2020 | www.hs2.org.uk

High Speed Two (HS2) is the new high speed railway for Britain. We are continually reviewing the works on our construction sites in line with Government and Public Health England (PHE) advice on dealing with COVID-19. The Government's current strategy makes it clear that construction activity can continue as long as it complies with this guidance. Please be assured that only sites that can operate within the guidelines are operational. All sites will remain under constant review. We have postponed all face-to-face engagement events and meetings and have put in place a number of channels to communicate with communities, such as letters and phone calls, as well as updates and alerts from each of the local community websites. You can sign up for regular updates in your local area at www.hs2inbucksandox.co.uk

What are we doing?

Due to the COVID -19 pandemic we postponed the Link Road and A413 road widening work programme. This was due to start at Easter 2020. We have now updated our timeline to complete this work which you will see below.

In addition to this notice we will also be providing a virtual exhibition of these works.

This exhibition can be found at www.hs2inbucksandox.co.uk and will be open from 8 July 2020 for the duration of the works.

The works will start 19 July 2020 and the road works are planned to be completed by the end of September 2020. Seasonal planting works will take place in Autumn 2020. We have planned for the majority of these works to take place during the school summer holiday to reduce impact to local schools, unfortunately there will be an overlap during September but we are working with the schools to ensure they can maintain highway access.

If you have a question about HS2 or our works, please contact our HS2 Helpdesk team on 08081 434 434 or email hs2enquiries@hs2.org.uk

Duration of works

Works begin July 2020 until Autumn 2020

What to expect

One-way and two-way traffic management systems in place

Night work

Road closures and traffic diversions

Eleven car park spaces will be suspended on Link Road

Vegetation and clearance of one tree (if local relocation of this tree is not possible)

Additional planting

What we will do

Manage any environmental impacts such as noise and lighting

Notice of highway improvement works

Notification



www.hs2.org.uk

What are we doing continued

The work is set out in four phases and considers the summer school holiday work due to take place in the Buryfield Car Park. You will find important information regarding a one-way system which will be in place on Link Road for two phases of the work at the end of this notification.

Link Road widening design

Following local feedback, we developed an alternative design for the widening of Link Road and the exit onto the A413 towards Wendover.

The updated design will put in place an additional Link Road lane approaching the A413 roundabout; it reduces the amount of road to be widened and the impact on the Buryfield entrance. These adaptations have been made to reduce the number of trees affected along Link Road from eight trees in the original design to one tree.

In February 2020 we held a community information event at the Baptist Church. We presented the revised design of the Link Road and A413 widening. This is the same design that we are taking forward to construction.

Phase 1, 2a and 2b works

July 2020 – August 2020

Phase 1 Link Road surveys and vegetation cut back

Sunday 19 July 2020 to Wednesday 29 July 2020

The works required in phase 1 are required to confirm the locations of existing utilities that will require local diversion during the later phase 3 works. Additionally, vegetation cut back will also be undertaken for the subsequent widening.

Overnight on the 19 July 2020, at the start of the school summer holidays, we will install a one-way traffic light system on Link Road. The one-way system detailed at the end of this notification will be in place 24 hours a day during the above period. There will be access for two-way outbound traffic from the Buryfield car park entrance on to the A413 and into Great Missenden. Eleven car park spaces will be suspended on Link Road. There will also be a 30mph speed limited narrow lane running in both directions on the A413.

Contact our HS2 Helpdesk team on **08081 434 434**

Notice of highway improvement works

Notification



www.hs2.org.uk

Phase 1, 2a and 2b works continued.

July 2020 – August 2020

Phase 1 Link Road surveys and vegetation cut back

Sunday 19 July 2020 to Wednesday 29 July 2020

During the hours of 8am to 6pm the temporary traffic lights at the Aylesbury Road and London Road junctions will be monitored and manually operated as required to ensure traffic can leave the village and join the A413. These two roads will serve as the two access points from the A413 into the village.

The works will include utility surveys, trial holes and vegetation being cut back for the subsequent widening onto and along the A413. These works will be undertaken during the day after 19 July. It is envisaged that one semi-mature tree will need to be removed but will be replaced by an additional new semi mature tree, if it is not possible to relocate the existing tree.

Each utility trial trench will be locally excavated, the utility position recorded and then backfilled.

Before any vegetation is cleared it will be thoroughly inspected by qualified ecologists. Any protected species, such as nesting birds, found to be present will be recorded and no vegetation will be cleared in that area.

The one-way system required for phase 1 and phase 3 works is detailed below:

Notice of highway improvement works

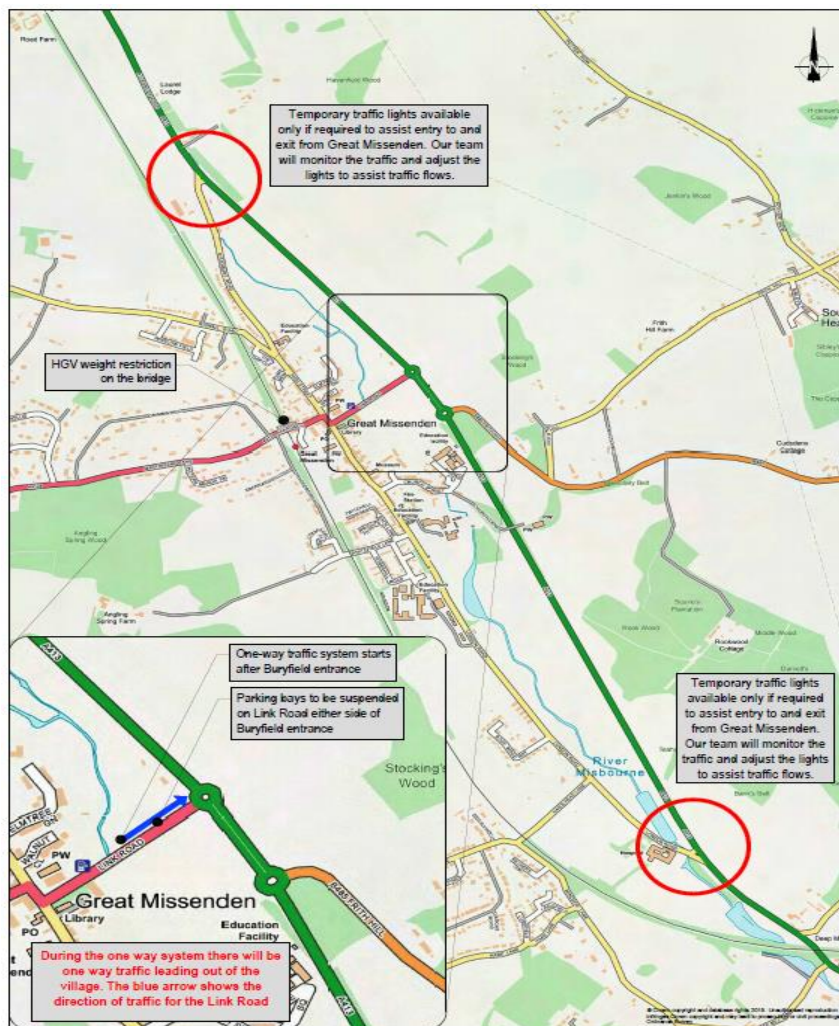
Notification



www.hs2.org.uk

Traffic management

One-way system map



Contact our HS2 Helpdesk team on **08081 434 434**

Notice of highway improvement works

Notification



www.hs2.org.uk

Phase 1, 2a and 2b works continued.

July 2020 – August 2020

Phase 2a Buryfield entrance works and A413 signage

Wednesday 29 July 2020 to Friday 7 August 2020

Following the completion of the phase 1 survey and associated works we will then begin the Buryfield entrance widening and A413 road verge signage installation. During phase 2 the Link Road will be open to traffic in both directions (the one-way system will be suspended). The traffic management used on Link Road for phase 1 will be removed overnight, including the one-way system. Following this the traffic management required for phase 2 will be established overnight.

This second phase of work will start and finish in the school summer holiday. The widening works are taking place on the village side of the Buryfield entrance only. There will be no trees removed for this entrance widening.

- Widening works include a new footpath entrance into Buryfield
- Works will complete in early August
- Phase 2a specific traffic management will be installed, as shown on the next page
- This will involve the continued suspension of 11 car parking spaces on the Link Road
- Temporary three-way traffic lights will be installed. This will allow traffic leaving Buryfield to pull out safely onto Link Road
- Vehicle access to Buryfield will remain open during the works

Notice of highway improvement works

Notification



www.hs2.org.uk

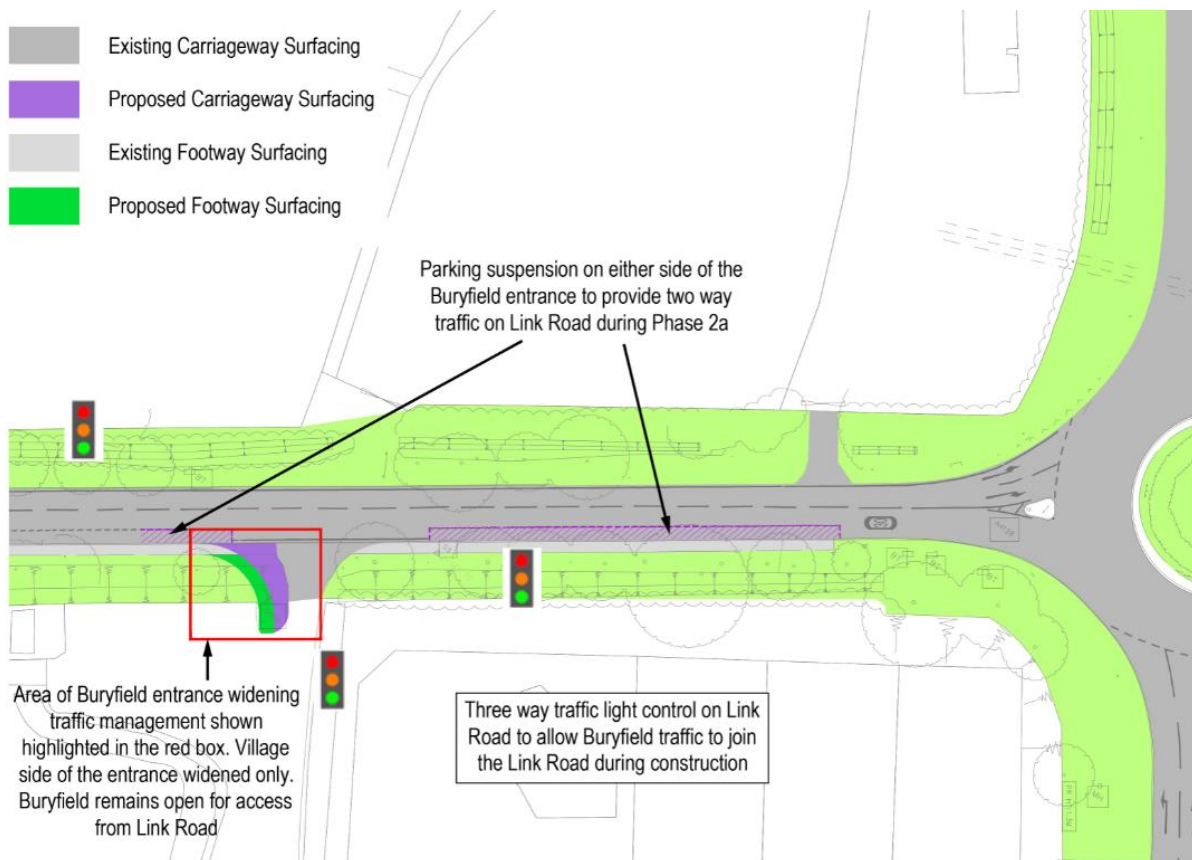
Phase 1, 2a and 2b works continued.

July 2020 – August 2020

Phase 2a Buryfield entrance works and A413 signage

Wednesday 29 July 2020 to Friday 7 August 2020

Traffic management plan required for the Buryfield entrance works



Contact our HS2 Helpdesk team on **08081 434 434**

Notice of highway improvement works

www.hs2.org.uk

Phase 1, 2a and 2b works continued.

July 2020 – August 2020

Phase 2a Buryfield entrance works and A413 signage

Wednesday 29 July 2020 to Friday 7 August 2020

While we are widening the Buryfield entrance we will also be installing road signage related to the Link Road widening within the A413 highway verge. The signage installation works will be undertaken at the following locations:

- On the Amersham southbound verge of the A413 approaching the Link Road Roundabout
- On the Aylesbury northbound verge approaching the Frith Hill and Link Road roundabouts of the A413

To complete these works, planned between the end of July and early August 2020, we will need to:

- Reduce the width for two-way traffic on the A413 by installing traffic management safety barriers overnight. This installation will require overnight use of traffic lights to maintain the flow on the A413. Traffic lights will then be required for the removal of these barriers at the end of phase 2a
- Maintain the 30mph speed restriction established during phase 1 on the A413 between the Aylesbury Road and London Road junctions for public and workforce safety
- Install the road signage alongside the A413 verge during day time working

The A413 road signage installation traffic management is detailed on the next page;

Notification



Notice of highway improvement works

Notification



www.hs2.org.uk

Phase 1, 2a and 2b works continued.


July 2020 – August 2020

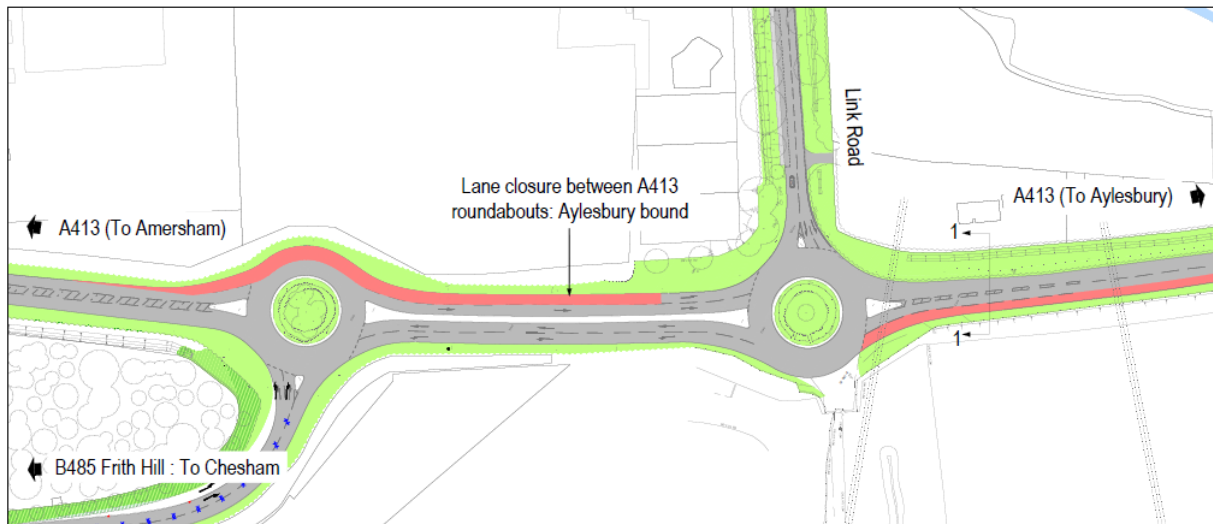
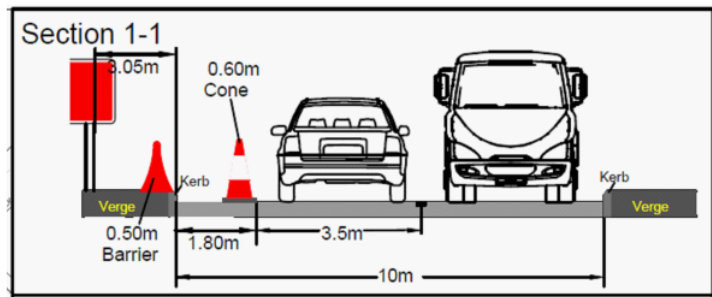
Phase 2a Buryfield entrance works and A413 signage

Thursday 30 July 2020 to Friday 7 August 2020

A413 road signage installation traffic management

Key:

 A413 Traffic management area.
Reduced width.



Contact our HS2 Helpdesk team on **08081 434 434**

Notice of highway improvement works

Notification



www.hs2.org.uk

Phase 1, 2a and 2b works continued.

July 2020 – August 2020

Phase 2b: Frith Hill

To complete the final elements of work to the B485 Frith Hill widening at the A413 roundabout junction we need to install additional safety signage and the permanent road marking. Phase 2b works will start following the completion of Phase 1 works and in parallel with the Phase 2a Buryfield and A413 signage works. To undertake this work we need to complete the following:

Night survey works: Thursday 30 July 2020

- A verge utility survey will be undertaken overnight. No road closures are required for this survey work. This work will require the installation of temporary three-way traffic lights on all approaches to the A413 / Frith Hill roundabout. These lights will control traffic joining and travelling along the A413

Night construction works: Wednesday 5 August to Friday 7 August 2020

- Full closure of the B485 Frith Hill approaching the A413 for 3 nights, with a signposted diversion route in place. The closure being in place from 8pm to 6am each night
- The A413 will be open to traffic in both directions as normal. During this period the B485 will also operate normally during the day

Notice of highway improvement works

www.hs2.org.uk

Phase 3: Link Road and A413 widening works

August 2020 – September 2020

Phase 3: Link Road & A413 widening

Once phases 1 and 2 have been completed we will move to Phase 3, this is when we will start construction of the Link Road and A413 widening works. This will take place from mid-August until the end of September.

This will involve the following:

- We will need to set up the full-time one-way system back on to Link Road. There will also be a 30mph speed limited narrow lane running in both directions on the A413. The traffic management for this will be set up overnight. The extent of the working area is shown in the plan on the next page
- Our construction works for the widening will happen during the day time
- We will also install safety bollards and high kerbs between the Link Road roundabout and the children's play area in Buryfield

Once our works are completed, we will remove the traffic management overnight. We expect this to be at the end of September.

Notification



Notice of highway improvement works

Notification



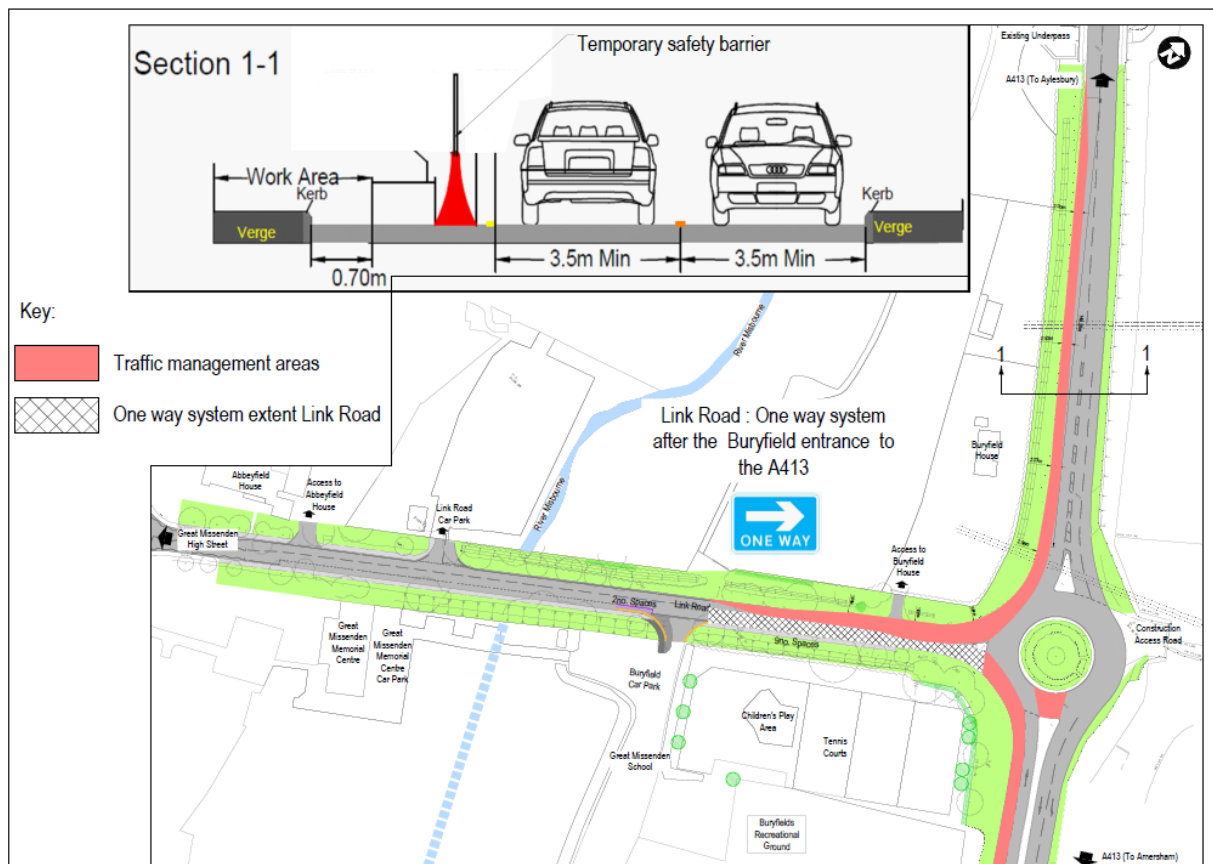
www.hs2.org.uk

Phase 3: Link Road and A413 widening works

August 2020 – September 2020

Phase 3: Link Road & A413 widening

One-way system traffic plan (This arrangement is also used during phase 1)



Contact our HS2 Helpdesk team on **08081 434 434**

Notice of highway improvement works

Notification



www.hs2.org.uk

Phase 3: Buryfield preparation for planting works

August & September 2020

Phase 3: Link Road, A413 widening and planting preparation works

We will begin to prepare the Buryfield ground ahead of the autumn planting season for the new trees and hedgerows. In addition to this we will complete the construction of the widening towards the end of September 2020. Once works have finished we will remove all traffic management on the Link Road and the A413. The new planting is detailed in the below plan:



Phase 4

November 2020

Phase 4: Tree and hedgerow planting

As part of our mitigation and once the works are completed, we have a programme of planting works in Autumn this year which comprises of;

- 8 new semi-mature trees planted in the area of the children's play area and the new Parish Council car park
- Enhancement hedge planting alongside the highway boundary on the Link Road and new planting in Buryfield adjacent to the skate park area
- Replacement of the semi mature tree lost due to the widening of the Link Road (if translocation of this tree is not possible)

Contact our HS2 Helpdesk team on **08081 434 434**

Notice of highway improvement works

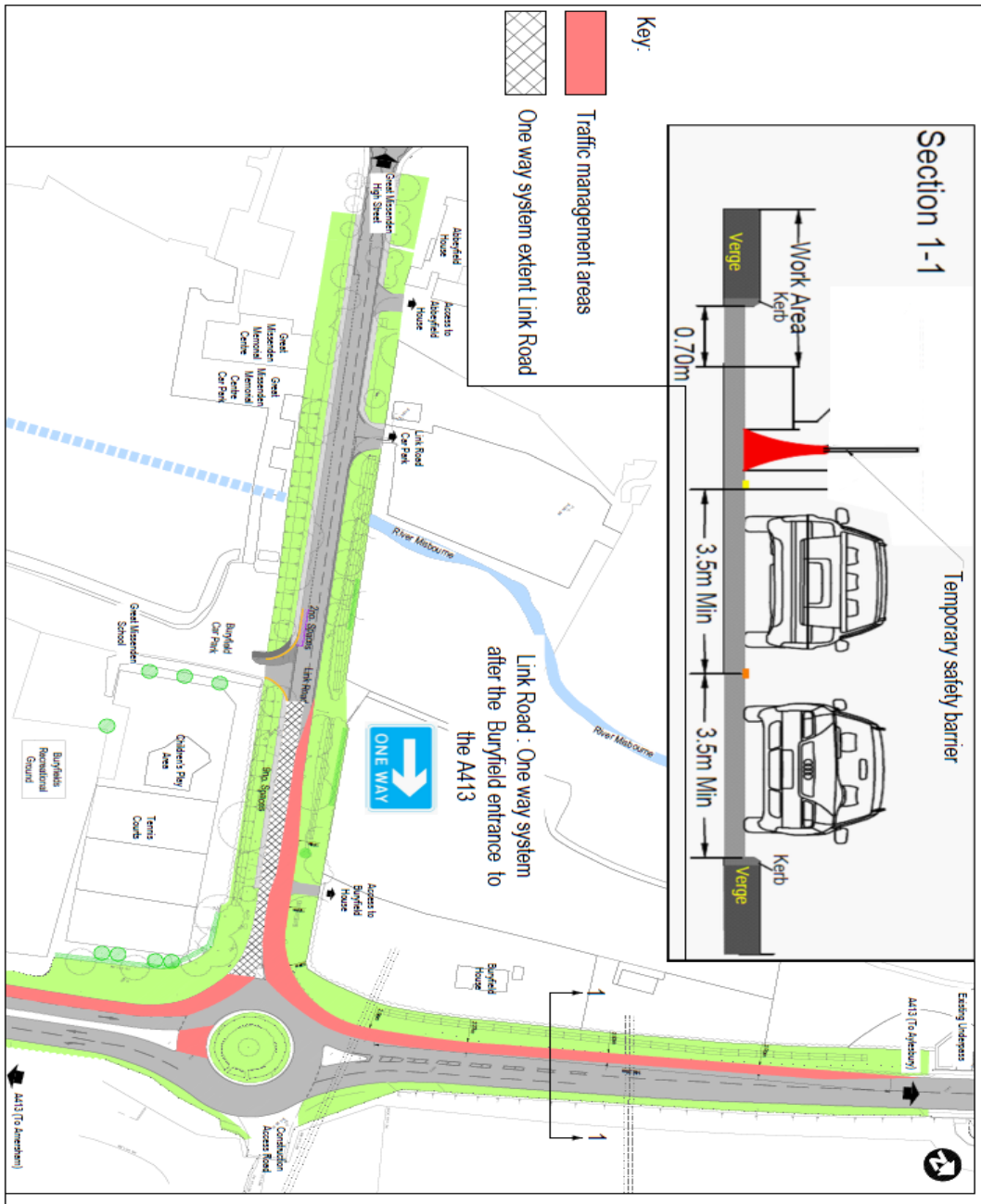
Notification



www.hs2.org.uk

Link Road Widening

One-way system traffic plan



Contact our HS2 Helpdesk team on **08081 434 434**

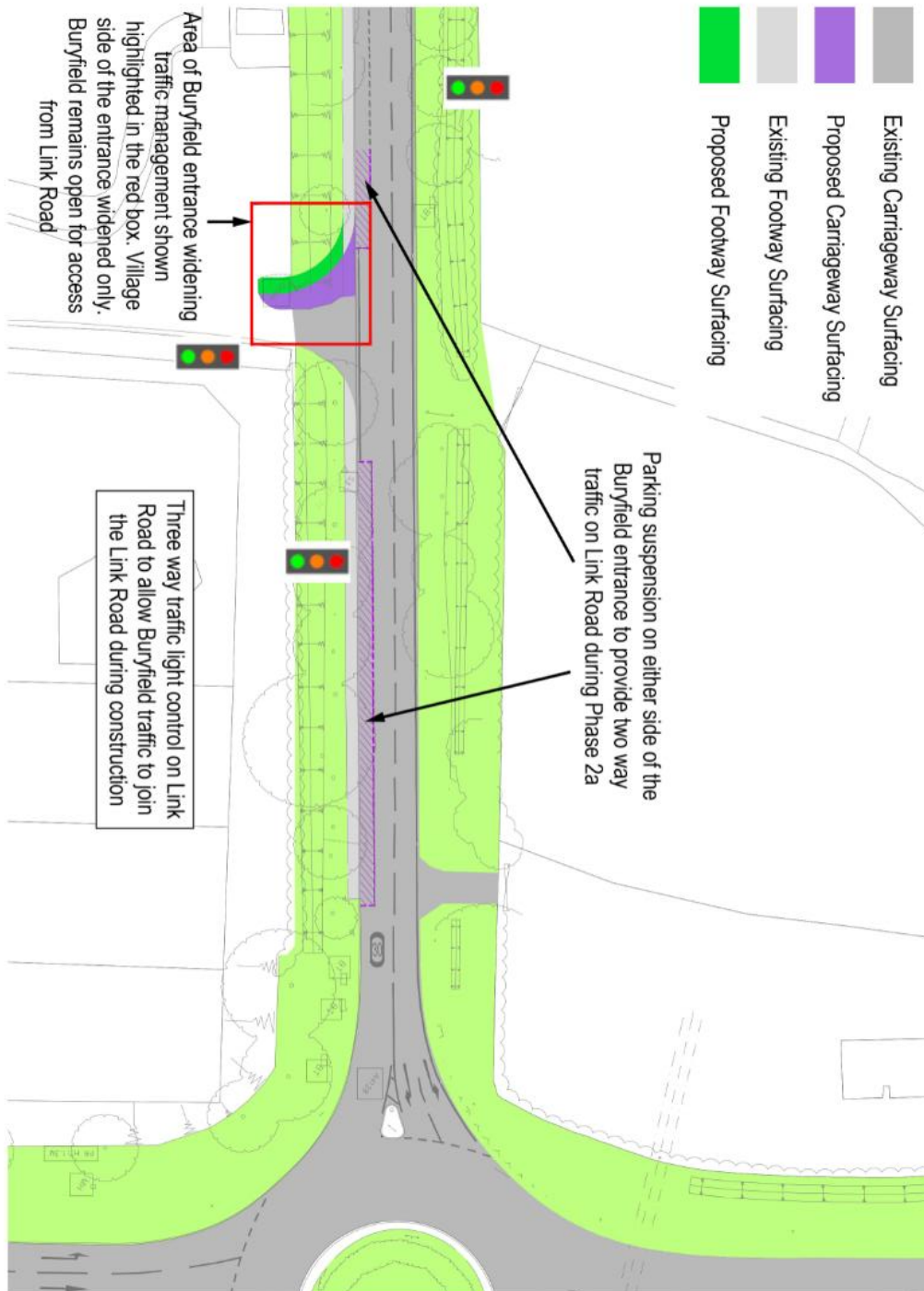
Notice of highway improvement works

Notification



www.hs2.org.uk

Buryfield entrance works



Contact our HS2 Helpdesk team on **08081 434 434**

Notice of highway improvement works

Notification



www.hs2.org.uk

Landscape and planting



Contact our HS2 Helpdesk team on **08081 434 434**

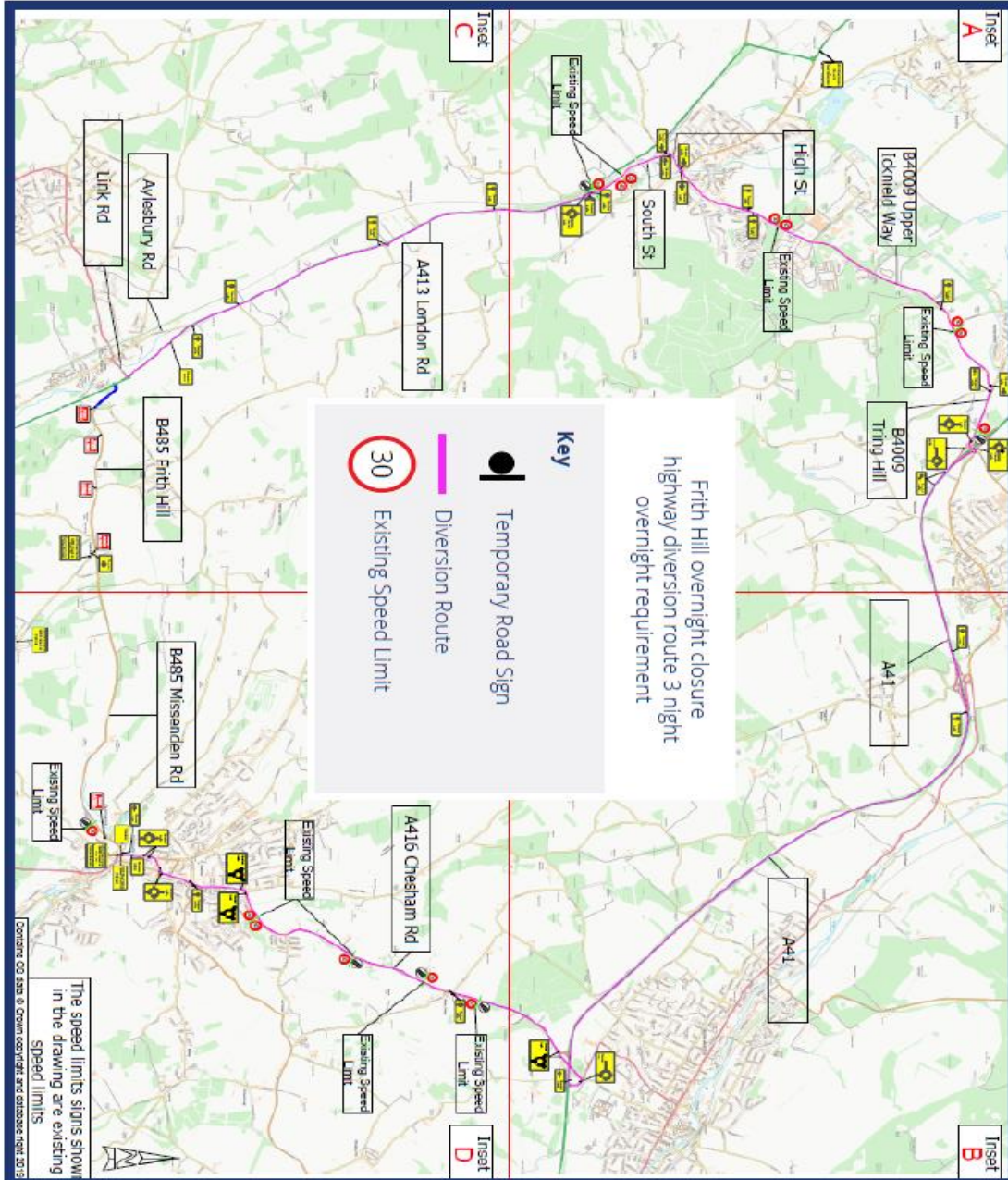
Notice of highway improvement works

Notification



www.hs2.org.uk

Frith Hill diversion route



Contact our HS2 Helpdesk team on **08081 434 434**

What else is happening in your area?

www.hs2.org.uk

Contact our new HS2 Helpdesk team

Our new Helpdesk team is based in our Head Office in Birmingham. This is so that we can provide you with the best service possible. Our team is here to listen and respond to your enquiry, complaint or feedback to help us be a good neighbour.

You can contact our Helpdesk team all day, every day of the year on:

Freephone: **08081 434 434**

Minicom: **08081 456 472**

Email: hs2enquiries@hs2.org.uk

Keep up-to-date with your local community website

To find out more about what's happening in your area and receive regular email updates, you can sign up to our local community websites at: www.hs2inyourarea.co.uk.

About our Community and Business Funds

We are offering two funds that are available to local communities and businesses between the West Midlands and London, to help with the disruption caused by our construction work. These are the Community and Environment Fund (CEF) and the Business and Local Economy Fund (BLEF).

The CEF is designed to give communities the opportunity to share in the benefits of HS2. It is an allocated fund that communities are able to apply for, to help to support local projects that aim to improve their local area.

The BLEF is designed to support local economies that may be disrupted by the construction of HS2. BLEF grants are for local business support organisations and local authorities to help maintain business activity in local communities.

For more information about each of these funds, including how to apply, please visit: <https://www.groundwork.org.uk/hs2funds>



Keeping you informed

We are committed to keeping you informed about work on HS2. This includes ensuring you know what to expect and when to expect it, as well as how we can help.

Residents' Charter and Commissioner

The Residents' Charter is our promise to communicate as clearly as we possibly can with people who live along or near the HS2 route. www.gov.uk/government/publications/hs2-residents-charter

We also have an independent Residents' Commissioner whose job is to make sure we keep to the promises we make in the Charter and to keep it under constant review. Find reports at: www.gov.uk/government/collections/hs2-ltd-residents-commissioner

You can contact the Commissioner at: residentscommissioner@hs2.org.uk

Construction Commissioner

The Construction Commissioner's role is to mediate and monitor the way in which HS2 Ltd manages and responds to construction complaints. You can contact the Construction Commissioner by emailing: complaints@hs2-cc.org.uk

Property and compensation

You can find out all about HS2 and properties along the line of route by visiting: www.gov.uk/government/collections/hs2-property
Find out if you're eligible for compensation at: www.gov.uk/claim-compensation-if-affected-by-hs2

Holding us to account

If you are unhappy for any reason you can make a complaint by contacting our HS2 Helpdesk team. For more details on our complaints process, please visit our website: www.hs2.org.uk/how-to-complain

Contact Us

Contact our HS2 Helpdesk team all day, every day of the year on:

 Freephone **08081 434 434**

 Minicom **08081 456 472**

 Email **hs2enquiries@hs2.org.uk**

Write to:

FREEPOST

HS2 Community Engagement

Website **www.hs2.org.uk**

To keep up to date with what is happening in your local area, visit: **www.hs2inyourarea.co.uk**

Please contact us if you'd like a free copy of this document in large print, Braille, audio or easy read. You can also contact us for help and information in a different language.

HS2 Ltd is committed to protecting personal information. If you wish to know more about how we use your personal information please see our Privacy Notice <https://www.gov.uk/government/publications/high-speed-two-ltd-privacy-notice>

Reference number: FUS_AWN_0086 HS2-EW-FUS-Ph1-Ar-Ce-C2-Traf-2-03/07/2020

High Speed Two (HS2) Limited, registered in England and Wales.
Registered office: Two Snowhill, Snow Hill Queensway, Birmingham B4 6GA.
Company registration number: 06791686. VAT registration number: 888 8512 56.