

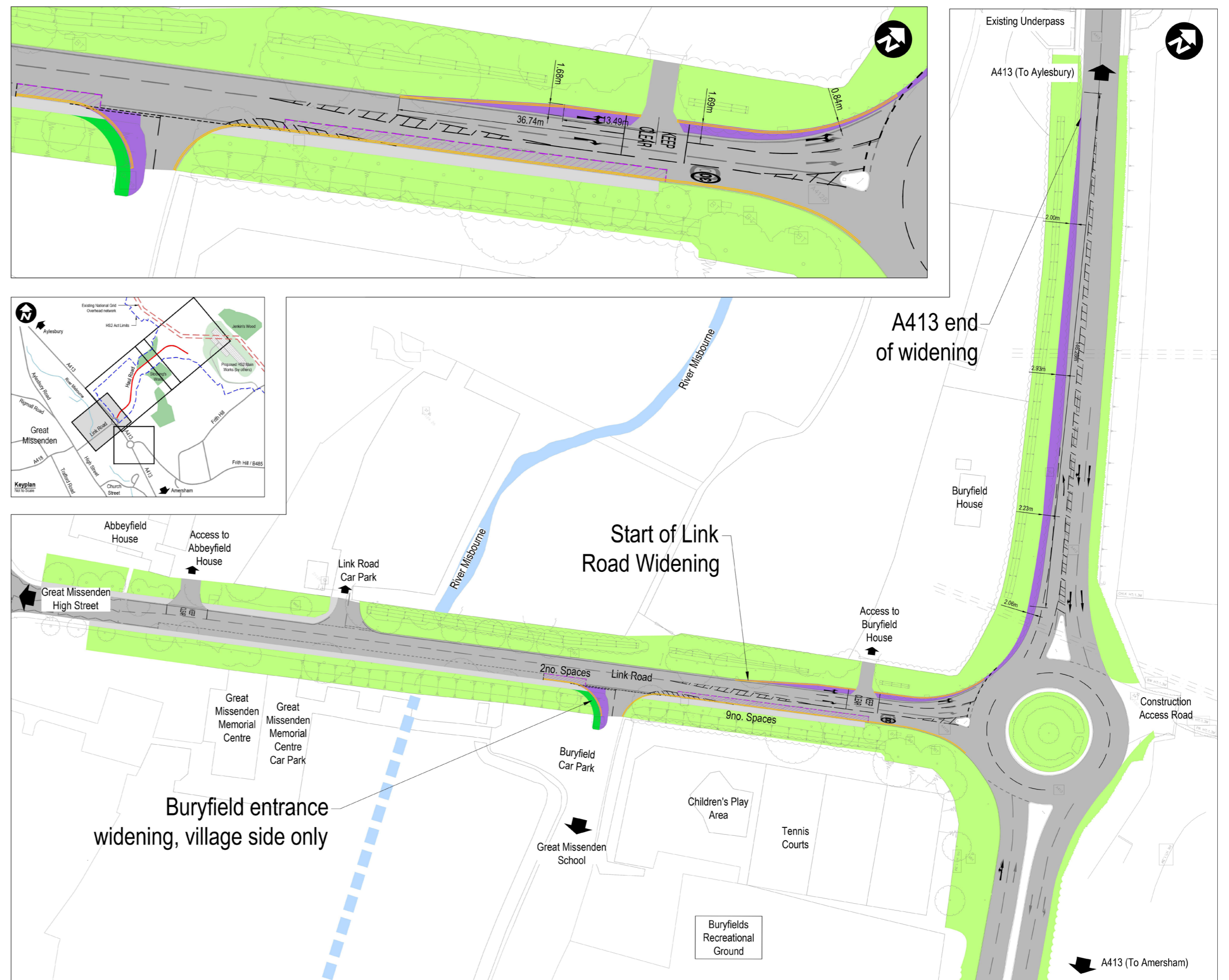
Following local feedback we updated the design of the Link Road widening works. The revised design was presented at the information event in February 2020. Our virtual exhibition provides a further update for residents on what the final design will look like and when our works will start.

At this exhibition you will learn more about:

- The design of the widening works for Link Road to improve traffic flow for residents
- The programme of works
- The traffic management approach to these works
- The widening of the entrance to the Buryfield car park with a footway for safer use
- The use of temporary safety measures between the roundabout and the skate park
- Landscaping involving new tree and hedgerow planting on Buryfield for screening from the highway
- Completion works on Frith Hill
- Additional works planned within the Buryfield Recreational Ground by the Parish Council and Combined School

Key:

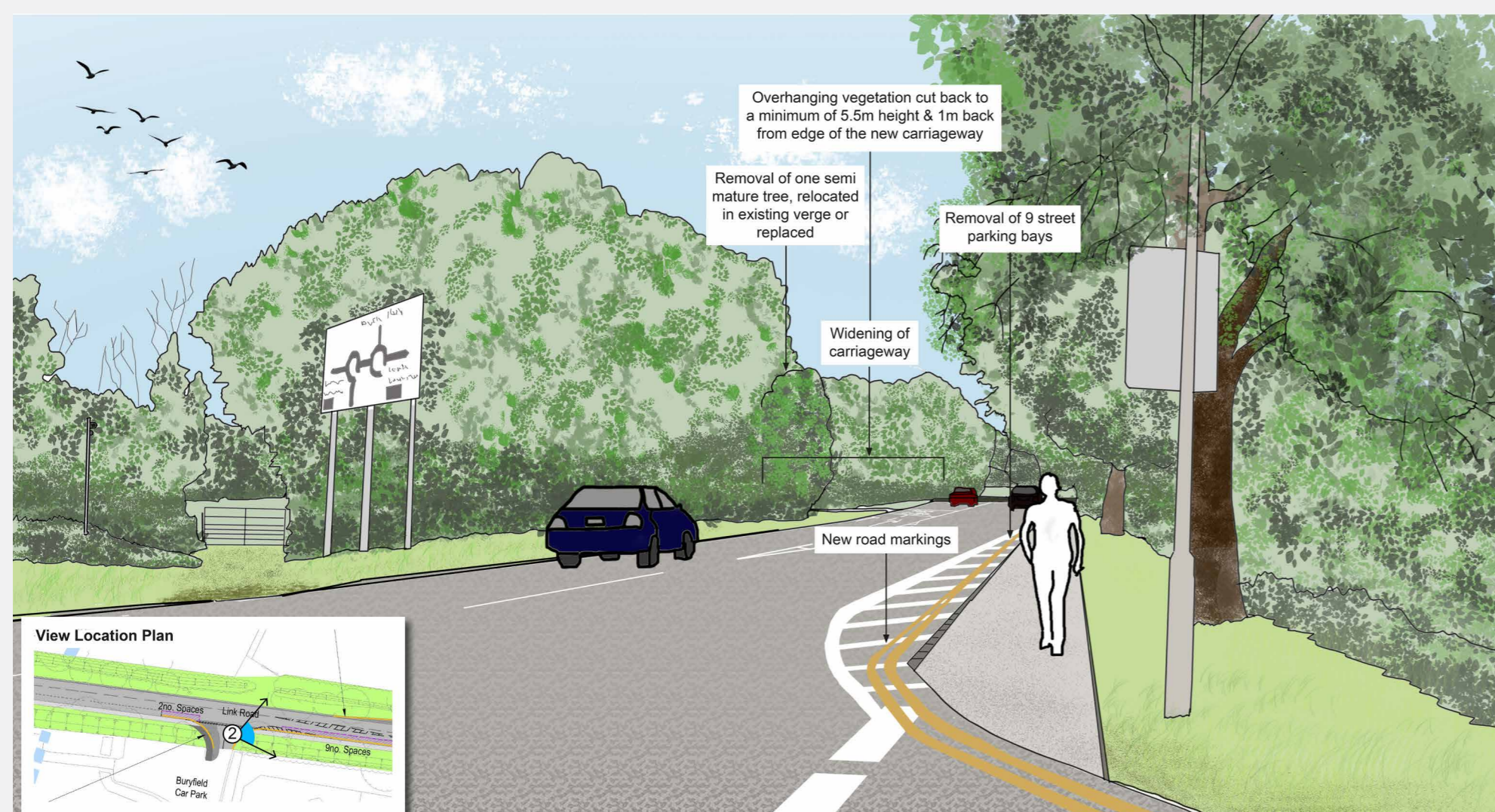
- Existing Carriageway Surfacing
- Proposed Carriageway Surfacing
- Existing Footway Surfacing
- Proposed Footway Surfacing
- Existing on street car parking spaces to be removed (11 no.)



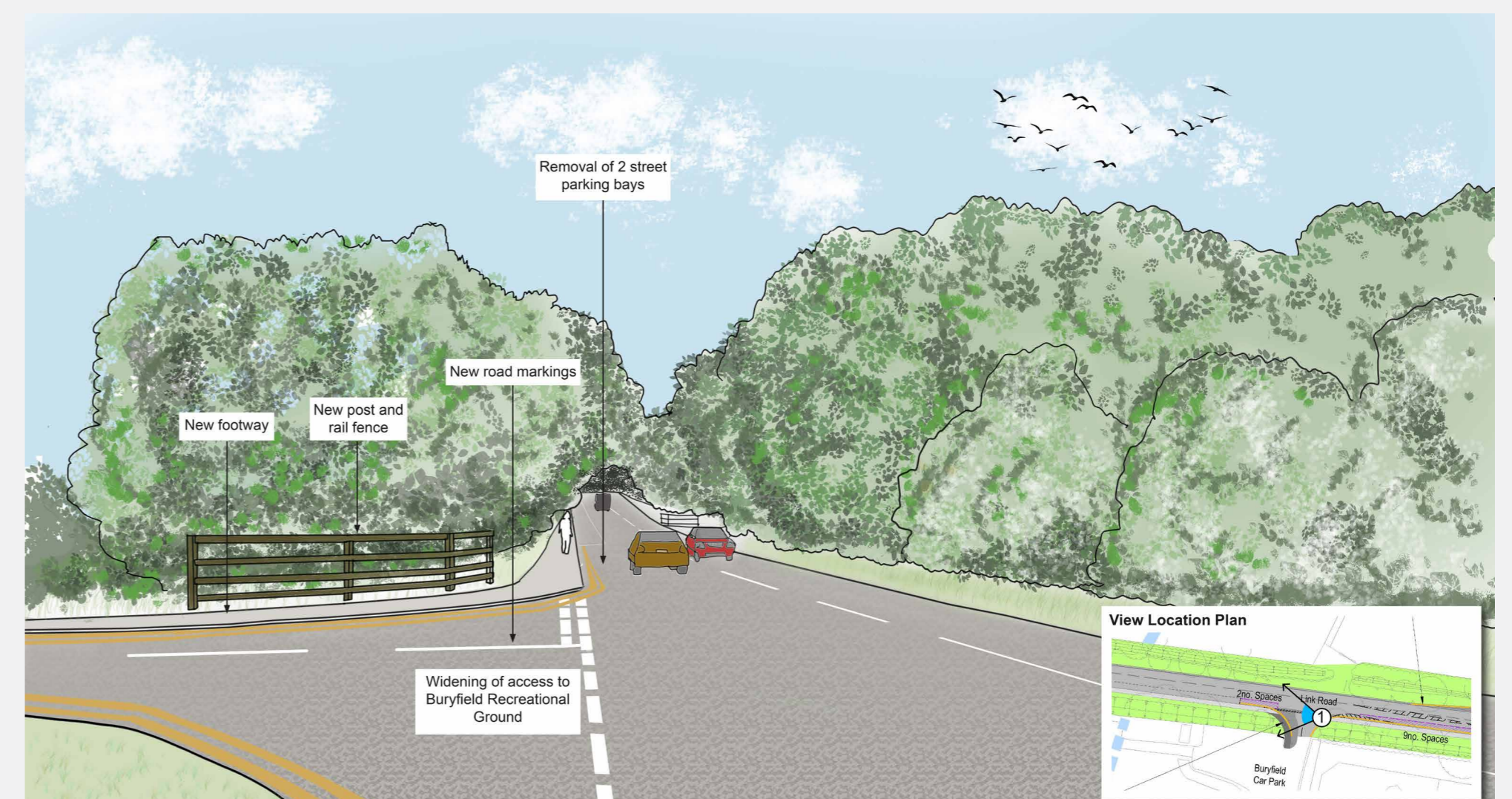
Link Road : Artist impressions of the completed works

Two artist generated images have been generated to show the completed widening of the Link Road.

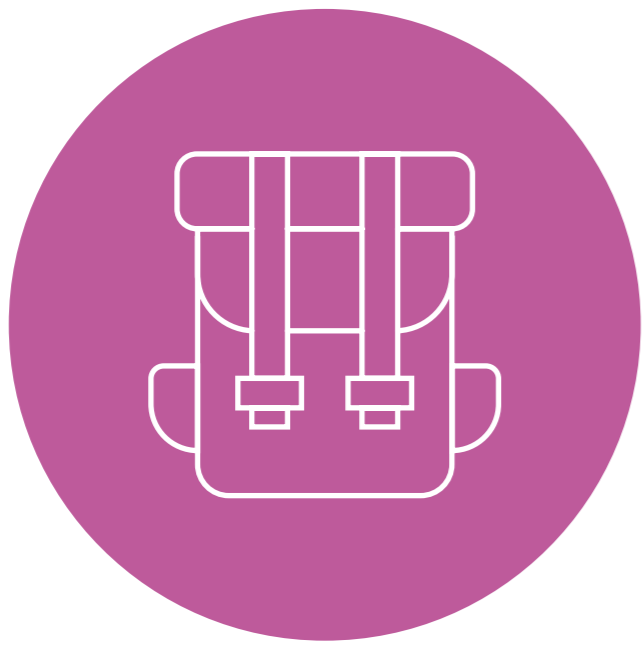
The first image is viewed from the village looking towards the A413



The second image is viewed from the Buryfield entrance looking back towards the Village



We have been listening to local residents and community groups while we updated the Link Road design. We have taken on board the comments we have received from the community:



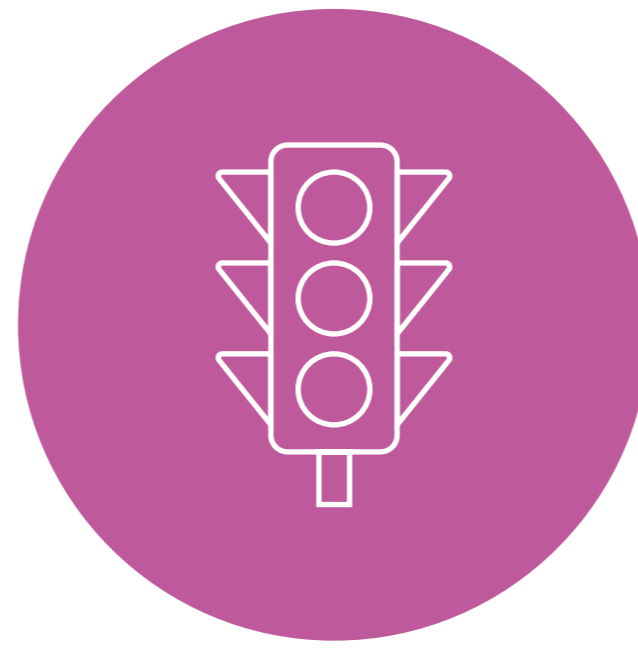
School

You said:

Keep disruption to the minimum for the local schools.

We did:

Our works are planned to maximise construction during the school summer holidays, although some work will extend into September.



Traffic

You said:

The traffic management approach needs to be improved to have less of an impact on residents.

We did:

We have shortened the length of the traffic management on Link Road. The Buryfield entrance is now connected to the village as well as the A413, which is different from the last time the traffic management was in place.

We still need the one way system for traffic leaving the village beyond the Buryfield entrance to keep our workers safe. This means traffic entering the village from the A413 will need to use London Road or Aylesbury Road.



Parking

You said:

Reduce the number of parking spaces that will be lost on Link Road during construction and the final scheme.

We did:

Our updated design has reduced the number of spaces lost by seven. The earlier design required 18 spaces to be removed, the revised scheme reduces this to 11 spaces. The Parish Council are building replacement car parking in the Buryfield for the spaces lost during the widening. This will take place in Summer 2020.



Environment

You said:

Keep as many of the trees in Link Road as possible.

We did:

Our updated design has significantly reduced the number of trees to be removed from 8 to 1. We will also plant new trees in the Buryfield in Autumn 2020 near the children's play area.

We need to remove one semi mature tree as part of our works, we are looking at the possibility of moving it to a new location.



Working Hours

You said:

Avoid night time working disruption to the village.

We did:

Our works are planned to take place during the day as much as possible. Night time working will be needed when we set up and remove traffic management from Link Road and the A413. There will also be a small amount of night time working on Frith Hill.



Access

You said:

Provide improved access onto and off the A413 at London Road and Aylesbury Road during the works.

We did:

Temporary traffic lights will be available at these two junctions. These will be used if we notice traffic volumes increase to a stage where they are required.

Work will begin at the start of the school holidays on **19 July 2020** and the works will be completed by the end of **September 2020**. We have planned for the majority of these works to take place during the school summer holiday to reduce the impact to local schools and the wider community. Unfortunately there will be an overlap during September but we are working with the schools to maintain road access. The Buryfield entrance will be completed during the holiday period.

All of the Phase 1, 2 and 3 works below will require traffic management to be installed overnight. When each of these phases of work are completed, we will remove overnight any traffic management which is no longer needed

Programme timeline

July 2020

Phase 1 : Link Road surveys and vegetation cut back

- Surveys and cutting back road side vegetation

Phase 2a : Buryfield entrance works & A413 signage

- Start upon completion of Phase 1 works. Link Road operates in two directions and Buryfield access maintained
- Start Buryfield entrance widening
- At the same time we will install new permanent verge road signage on the A413

Phase 2b : Frith Hill

- One night utility survey with night time traffic management

August 2020

Phase 2b : Frith Hill

- Signage and white lining completion works undertaken for 3 nights, Frith Hill closure and diversion route in place

Phase 2c : Buryfield works & A413 signage

- Complete widening of Buryfield entrance and A413 verge signage installation

Phase 3 : Link Road & A413 widening

- One way traffic management on the Link Road and narrow lanes on the A413
- Utility diversions undertaken in the verge
- Start construction of the widening and Buryfield safety measures

September 2020

Phase 3 : Link Road & A413 widening

- Prepare Buryfield ground for the autumn planting of new trees and hedgerow
- Finish construction of the widening towards the end of September

Late October/Early Nov 2020

Phase 4 : Tree and hedgerow planting

- Plant new trees and hedgerow in Buryfield plus highway boundary hedge enhancement on Link Road

	July		August					September				
Week commencing	20 July	27 July	3 Aug.	10 Aug.	17 Aug.	24 Aug.	31 Aug.	7 Sept.	14 Sept.	21 Sept.	Autumn	
Week Number	1	2	3	4	5	6	7	8	9	10		
School holidays	[Orange bar with arrow from 20 July to 31 Aug.]											
Phase 1 Link Road: surveys & vegetation cut back	[Light blue bar with arrow from 20 July to 27 July]											
Phase 2a: Buryfield entrance widening & A413 signage installation		[Light green bar with arrow from 3 Aug. to 10 Aug.]										
Phase 2b: Frith Hill works		[Dark blue bar with arrow from 3 Aug. to 10 Aug.]										
Phase 3 : Link Road & A413 widening construction			[Yellow bar with arrow from 10 Aug. to 21 Sept.]									
Phase 4 : Planting in Buryfield											[Pink bar with arrow from 21 Sept. to Autumn]	

Phase 1: Link Road survey and vegetation clearance

Before we start our works to widen Link Road we need to locate the existing utilities, such as BT. We also need to cut back some of the vegetation. This activity is shown as Phase 1 in the programme.

Traffic management

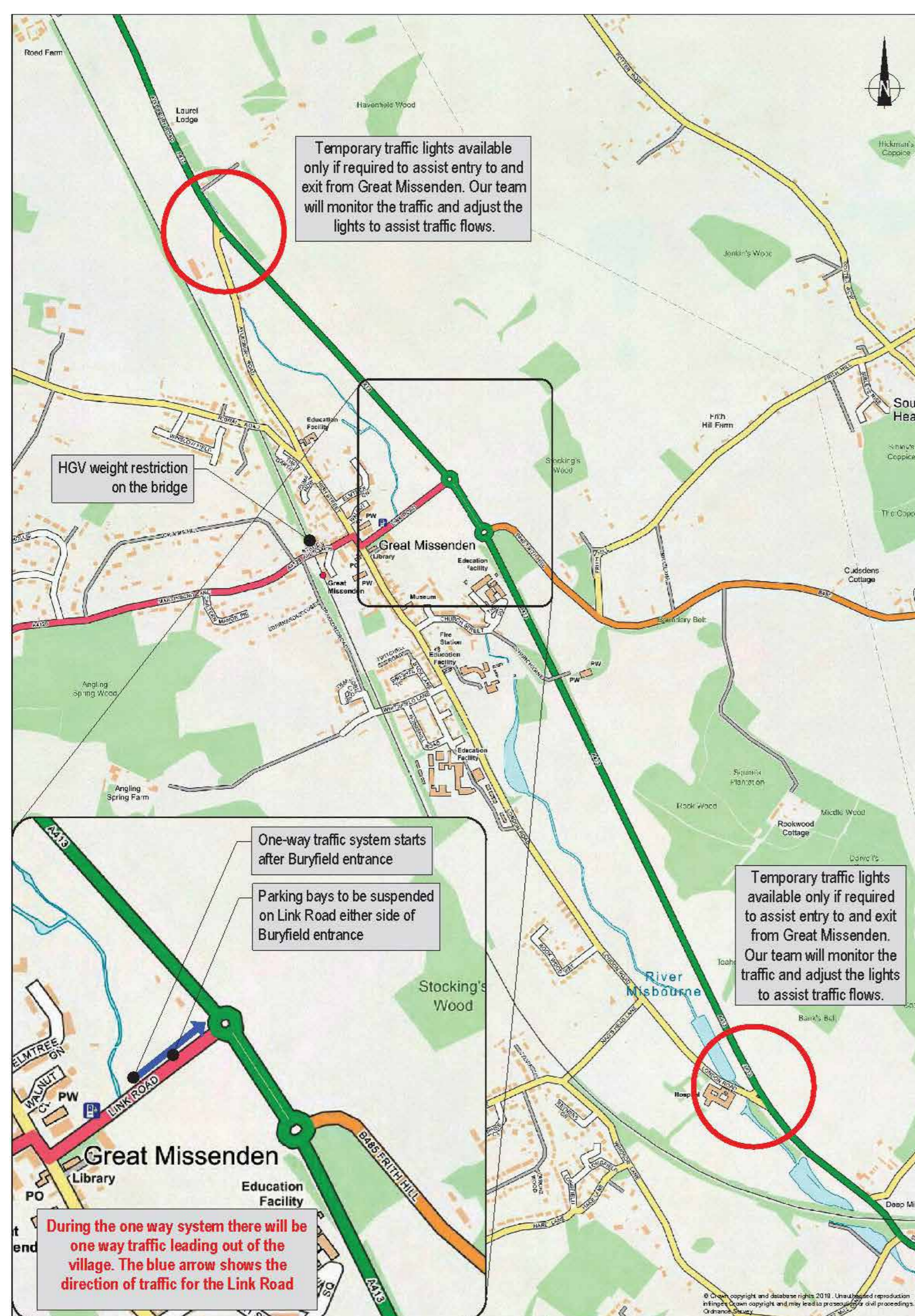
Overnight on the 19 July 2020 we will set up traffic management on Link Road and introduce a one way system, outbound from the village. This is to provide a safe working space for our workforce. There will also be overnight installed traffic management on the A413. This will include 30mph speed limited, two way, narrow lane running on the A413. The one way system for Link Road is shown on the plan below. This traffic management will remain in place full time for the Phase 1 works.

Vegetation cut back

To enable us to undertake the utility surveys and complete the later Phase 3 works we need to relocate or remove one semi mature tree on the Link Road. We will also cut back the vegetation on the highway verge within the area required for the widening of the Link Road and along the Aylesbury bound verge of the A413.

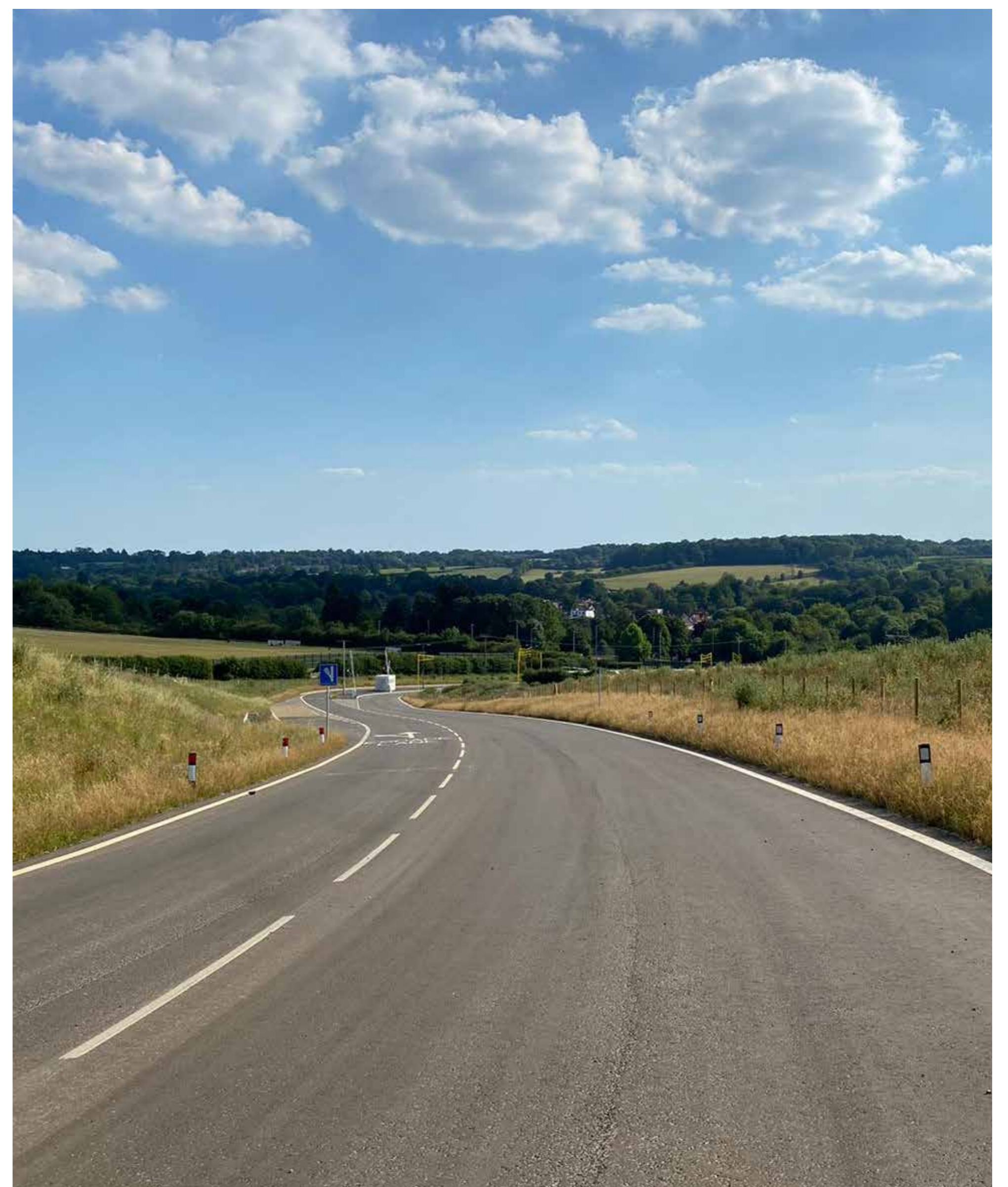
Utility survey trial holes

We need to make sure that we have identified all utility services in our works area as sometimes there are pipes and cables that have not been recorded. We will do this by undertaking slit trench trial holes in the highway verge.



For us to complete the Phase 1 and Phase 3 works safely and to minimise disruption we need to place traffic management.

- Works programmed to maximise the school holidays
- Adopt a similar full time traffic management configuration to the previous scheme for Link Road
- One way Link Road single lane outbound route to the A413 roundabout. No village inbound traffic permitted
- Inbound village traffic from the A413 to use Aylesbury Road and London Road only
- Parking suspension on Link Road in the area of widening
- Link Road two way up to and including the Buryfield entrance
- Traffic lights available, only if required, to allow traffic to join the A413 at the London and Aylesbury road junctions

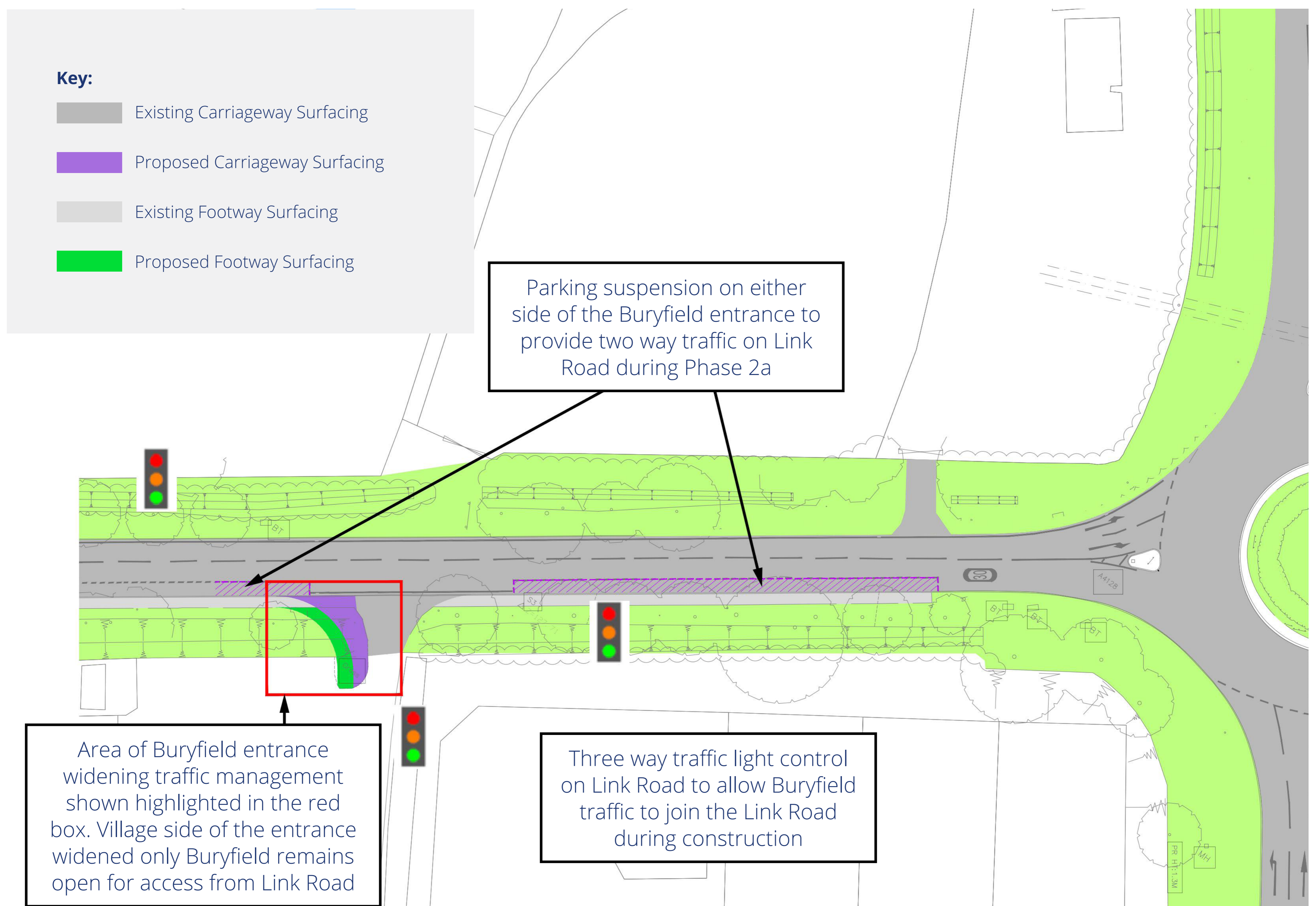


Phase 2a: Buryfield entrance widening work

The Buryfield entrance is being widened during phase 2a of the works and will follow the completion of phase 1. The traffic management used on Link Road for phase 1 will be removed, including the one way system.

This second phase of work will start and finish in the school summer holiday. The widening works are taking place on the village side of the Buryfield entrance only. There will be no trees removed for this entrance widening.

- During phase 2 the Link Road will be open to traffic in both directions (the one way system will be suspended)
- Widening works include a new footpath entrance into Buryfield
- Works will complete in early August
- Phase 2a specific traffic management will be installed, as shown on the below plan.
- This will involve the continued suspension of 11 car parking spaces on the Link Road
- Temporary three way traffic lights will be installed. This will allow traffic leaving Buryfield to pull out safely onto Link Road
- Vehicle access to Buryfield will remain open during the works



While we are widening the Buryfield entrance we will also be installing road signage related to the Link Road widening within the A413 highway verge.

The signage installation works will be undertaken at the following locations:

- On the Amersham southbound verge of the A413 approaching the Link Road Roundabout
- On the Aylesbury northbound verge approaching the Frith Hill and Link Road roundabouts of the A413

To complete these works, planned between the end of July and early August 2020, we will need to:

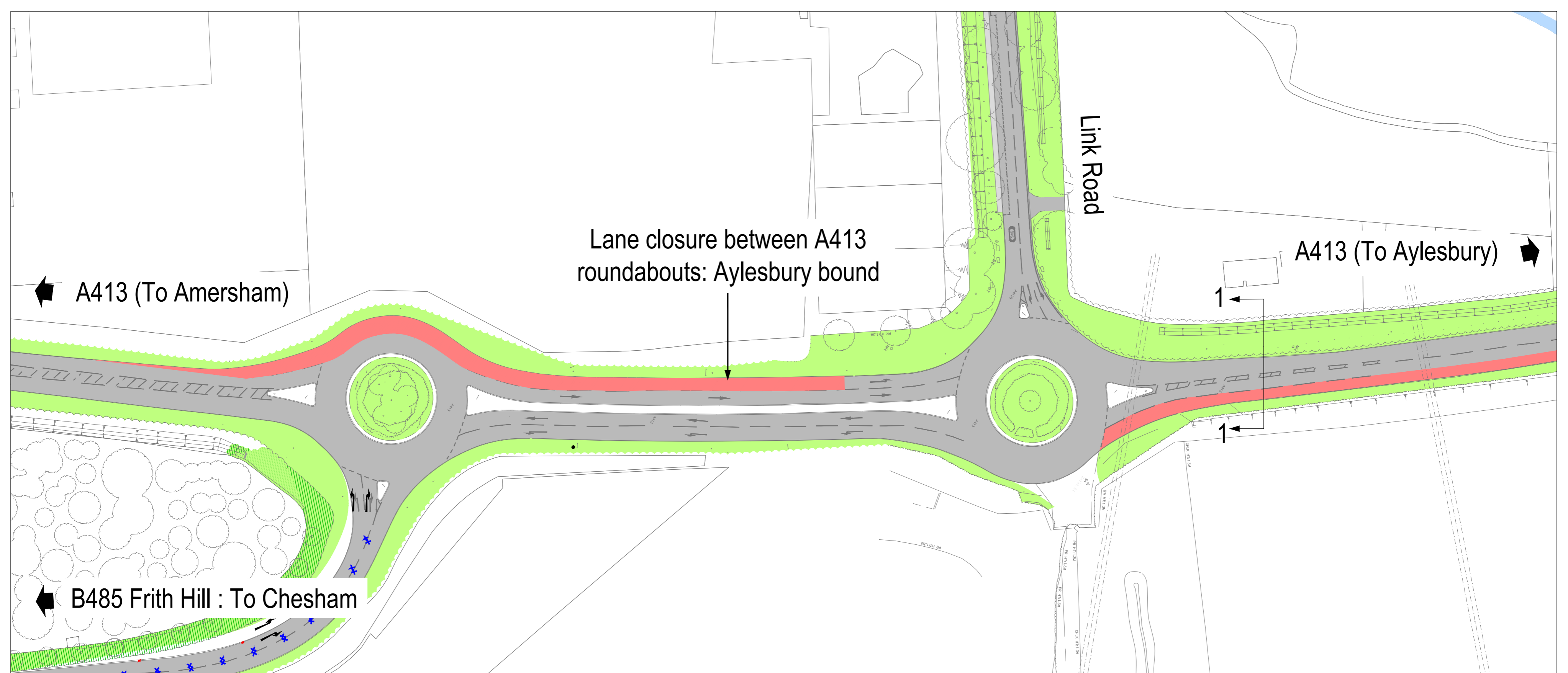
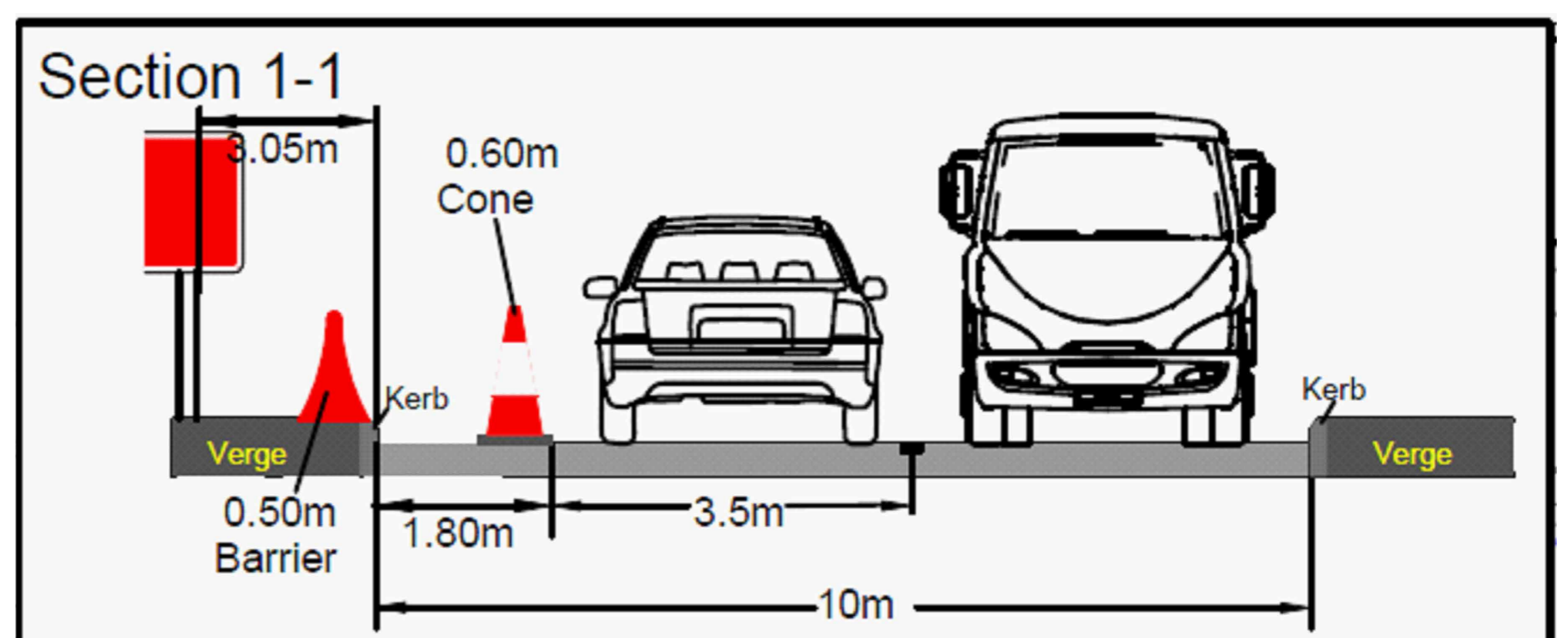
- Reduce the width for two-way traffic on the A413 by installing traffic management safety barriers overnight. This installation will require overnight use of traffic lights to maintain the flow on the A413. Traffic lights will then be required for the removal of these barriers at the end of phase 2a
- Maintain the 30mph speed restriction established during phase 1 on the A413 between the Aylesbury Road and London Road junctions for public and workforce safety
- Install the road signage alongside the A413 verge during day time working

Phase 2 : Traffic management

- Two way traffic maintained on the A413
- Narrow lane running on the A413, 30mph speed limit
- Working area created for the safe installation of permanent road verge signage related to the Link Road widening

Key:

-  A413 Traffic management area. Reduced width.



To complete the final elements of work to the B485 Frith Hill widening at the A413 roundabout junction we need to install additional safety signage and the permanent road marking. Phase 2b works will start following the completion of Phase 1 works and in parallel with the Phase 2a Buryfield works. To undertake this work we need to undertake the following:

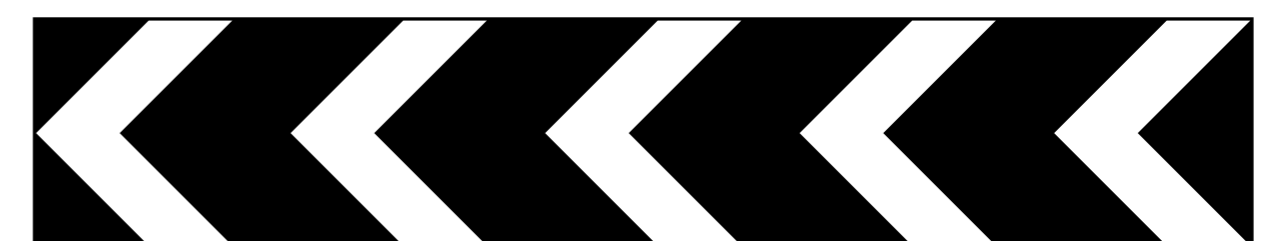
Night survey works

- A verge utility survey. No road closures are required for this survey work
- This will require the installation of temporary three way traffic lights on all approaches to the A413 / Frith Hill roundabout. These lights will control traffic joining and travelling along the A413

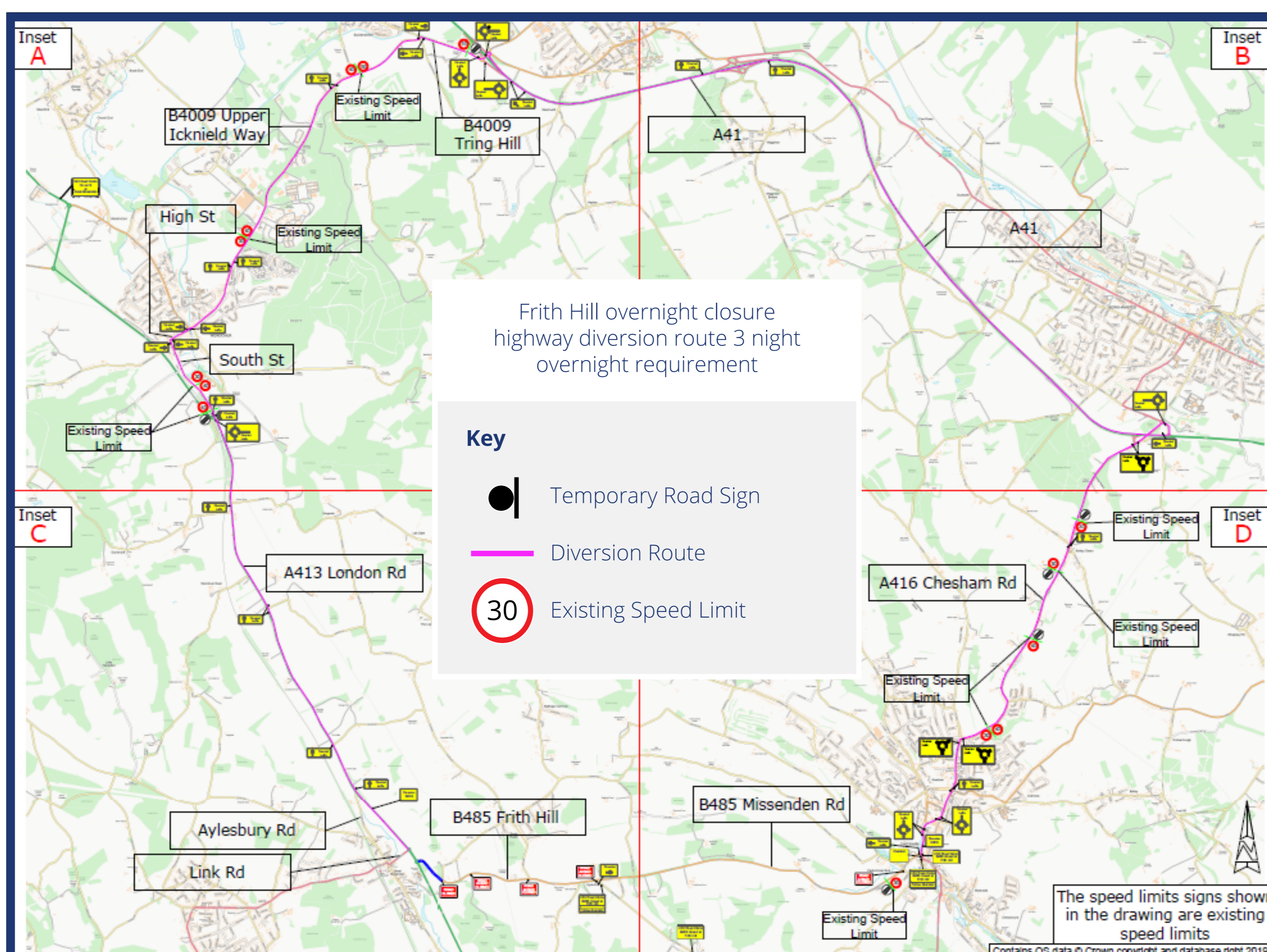
Night construction works

To complete the works we need to work for up to 3 nights between 5 – 7 August 2020. This will require the following :

- Full closure of the B485 Frith Hill approaching the A413 for 3 nights, with a signposted diversion route in place. The closure being in place from 8pm to 6am each night
- The A413 will be open to traffic in both directions as normal



Additional permanent road signage installation, visible to vehicles joining the A413 from Frith Hill



Phase 3 : Link Road and A413 widening

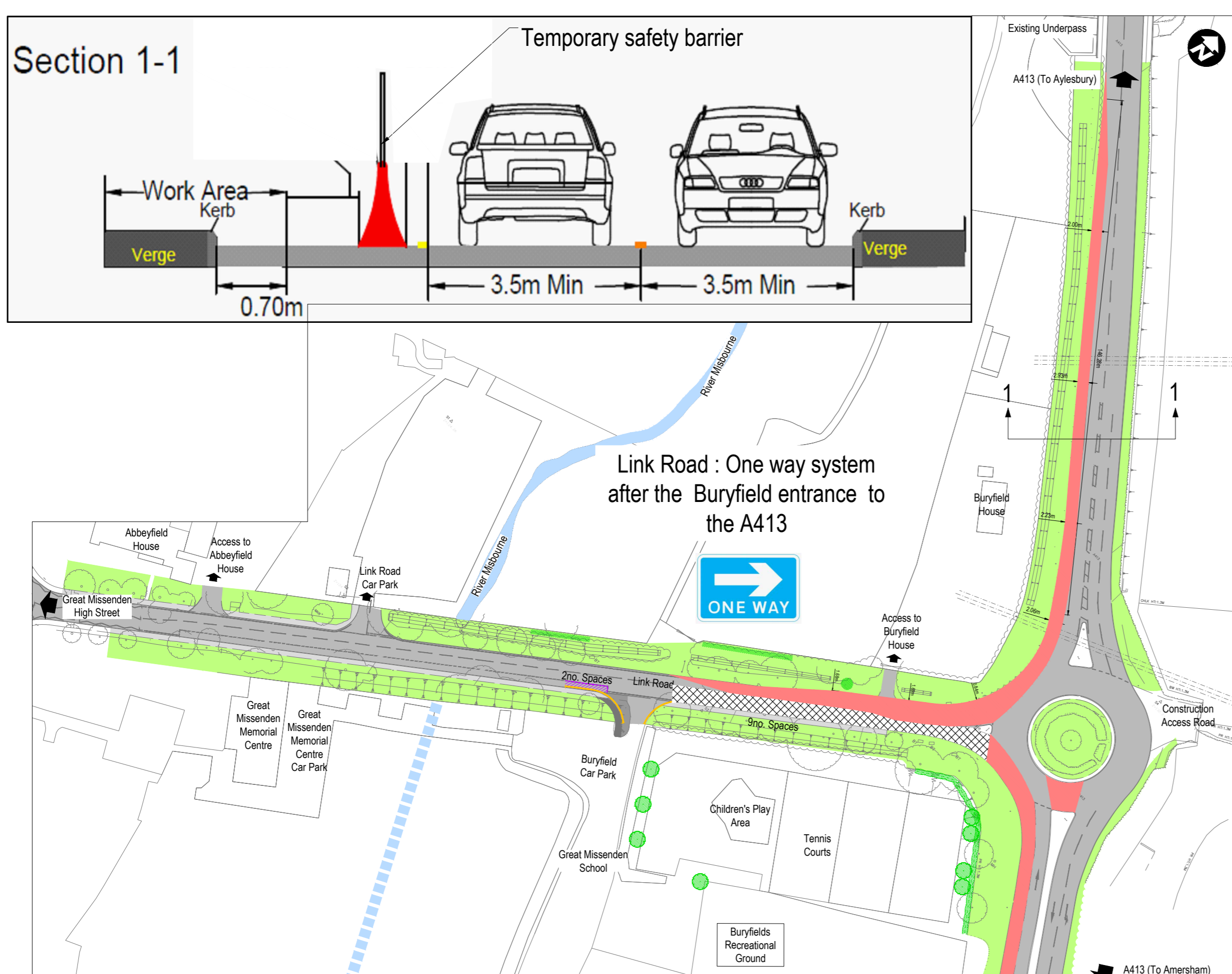
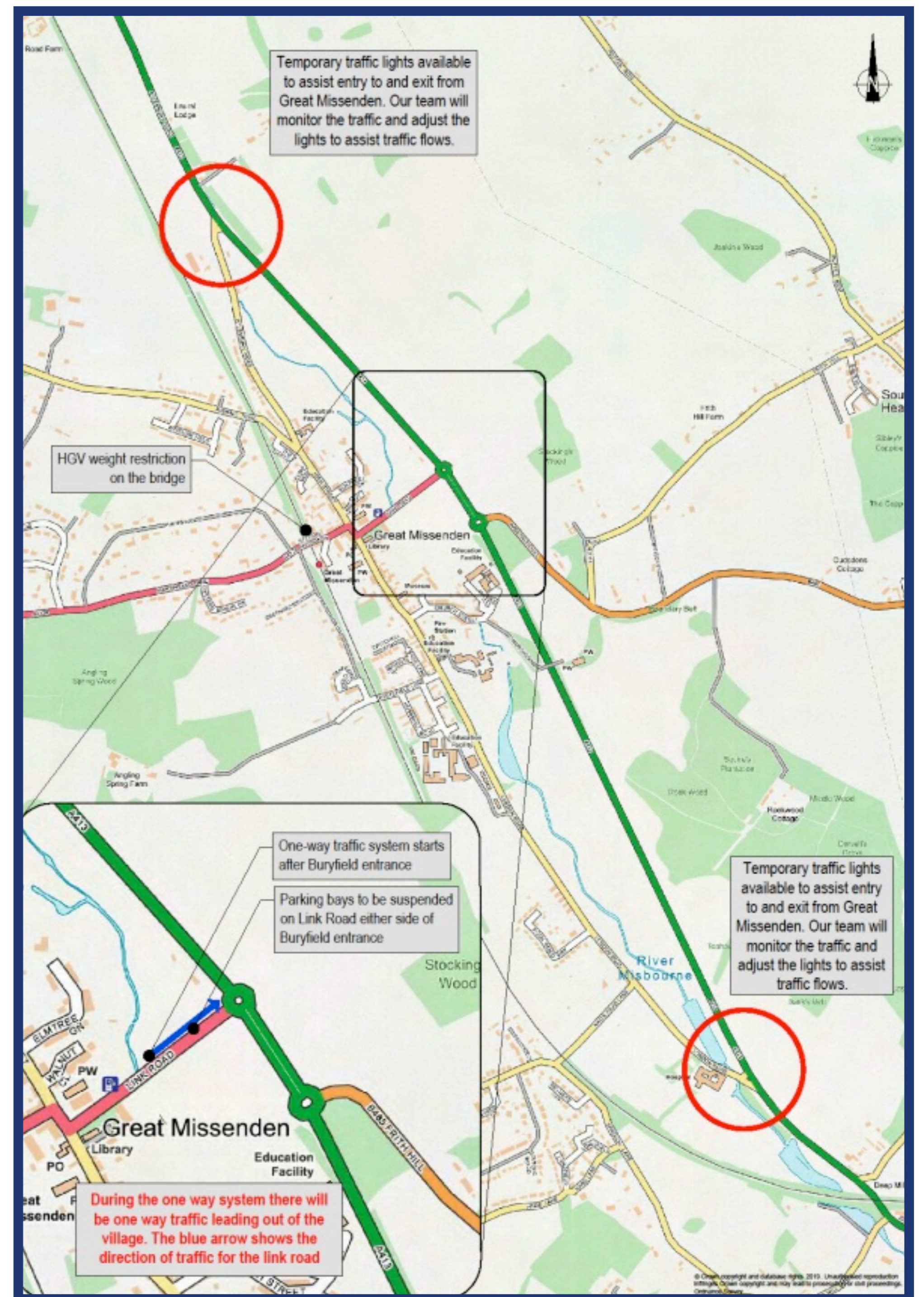
Once phases 1 and 2 have been completed we will move to Phase 3, this is when we will start construction of the Link Road and A413 widening works. This will take place from mid August until the end of September. This will involve the following:

- We will need to set up the full time one way system back on to Link Road. There will also be a 30mph speed limited narrow lane running on the A413. The traffic management for this will be set up over night
- The plan to the right shows how the one way system will work
- Our construction works for the widening will happen during the day time
- We will also install safety bollards and high kerbs between the Link Road roundabout and the children's play area in Buryfield

Once our works are completed, we will remove the traffic management overnight. We expect this to be in the end of September.

For us to complete the phase 3 works safely and to minimise disruption we need to reintroduce the Link Road one way traffic management scheme that was adopted during phase 1

- One way Link Road single lane outbound route to the A413 roundabout. No village inbound traffic permitted
- Inbound village traffic from the A413 to use Aylesbury Road and London Road only
- Parking suspension on Link Road in the area of widening
- Link Road two way up to and including the Buryfield entrance
- Traffic lights available, only if required, to allow traffic to join the A413 at the London and Aylesbury road junctions

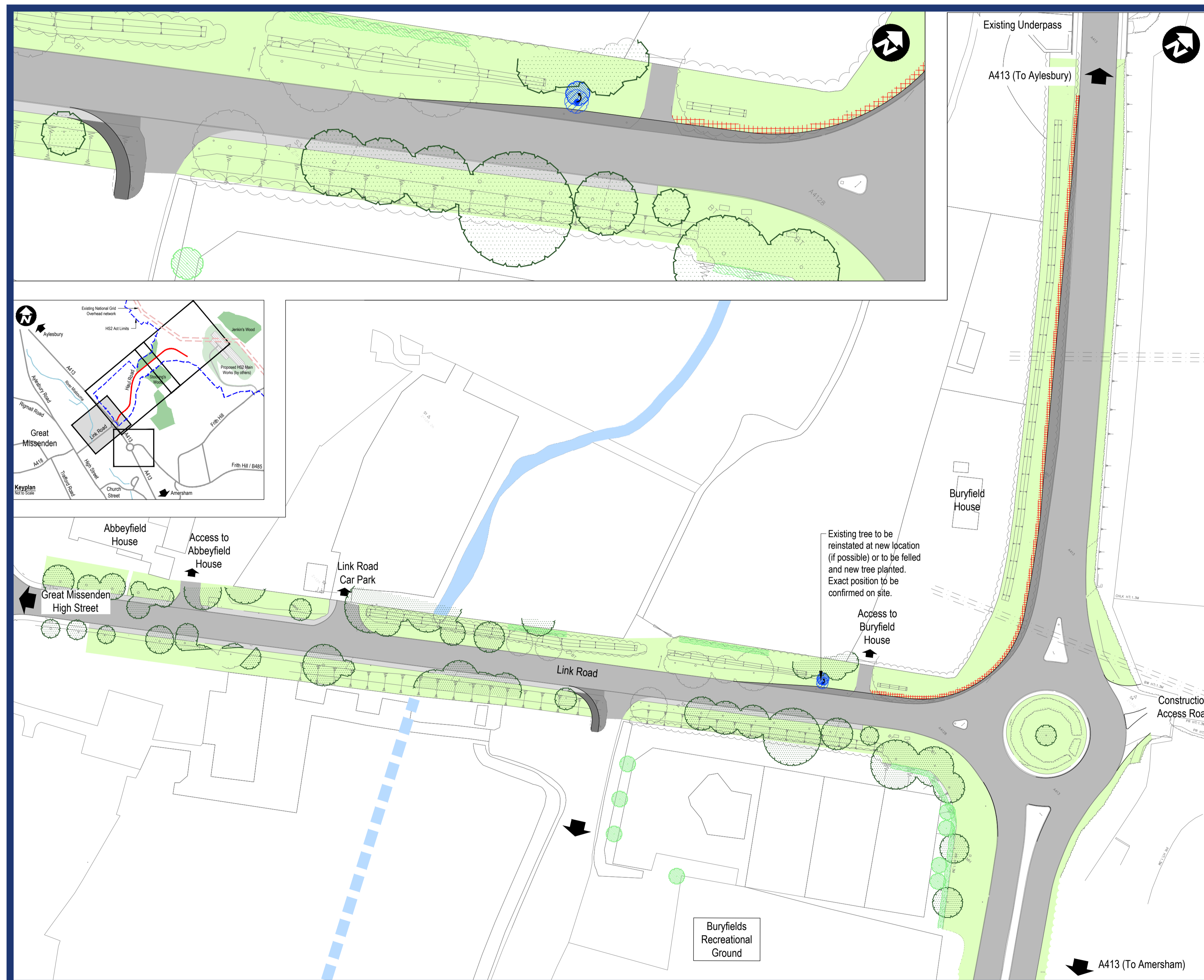


Phase 1 and Phase 3 traffic management arrangement: Link Road and A413

- Lane width restrictions on the A413 : Two way traffic 30mph speed limit
- Single northbound Aylesbury A413 traffic lane between Link Road and Frith Hill roundabouts
- Link Road one way traffic system to the A413 from the village: No access into the village from the A413 at Link Road
- One way system starts after the Buryfield entrance

Key:

- Traffic Management Areas
- One Way System Extent Link Road



As part of our mitigation and once the works are completed we have a programme of planting works in Autumn this year which comprises of;

- 8 new semi-mature trees planted in the area of the children's play area and the new Parish Council car park
- Enhancement hedge planting alongside the highway boundary on the Link Road and new planting in Buryfield adjacent to the skate park area
- Replacement of the semi mature tree lost due to the widening of the Link Road (if translocation of this tree is not possible)
- Work to prepare the ground for the tree and hedgerow planting will commence during phase 3 with subsequent seasonal planting in the autumn

Key:

-  Existing tree to remain
-  Existing tree to be reinstated at new location (if possible) or to be felled and new tree planted. Exact position to be confirmed on site
-  Proposed hedgerow infill planting
-  Proposed trees (8no.)
-  Existing vegetation to be cut back 1m (minimum) from proposed kerblines to a height of 5.2m

Separate works are planned by both the Great Missenden Parish Council and the Church of England Combined School. This is to provide additional parking facilities within the Buryfield to serve the parish and the school respectively.

- **The school** have recently gained planning permission for resurfacing works on an existing semi-formal car park, establishing 37 car parking spaces and a two-way carriageway, a new pedestrian footpath, the installation of low-level lighting and the erection of a new, electric vehicle access gate and a new pedestrian access gate and fencing.
- **The parish council** have received planning approval to extend the car park at Buryfield by 22 spaces with changes to landscaping and relocation of picnic tables. The work will be carried out alongside our works over the summer holiday period, with completion forecast in time for the Autumn school term.
- Details of the approved parish scheme are shown below. We will continue to coordinate access with the parish and school regarding their programme of works and the HS2 Link Road scheme.

To support awareness of the approved planning scheme to the community the details below have been provided by the Parish Council :

The extension to the Buryfield car park

- To be completed over the summer holiday by the Parish Council and its contractor to provide a further 22 spaces as marked
- Start date 13 July for approximately 5 weeks
- Access maintained to the school and Memorial Hall throughout
- Constructed in parallel with the Fusion HS2 scheme
- The Parish Council is coordinating with Fusion to minimise disruption to the school and community

